

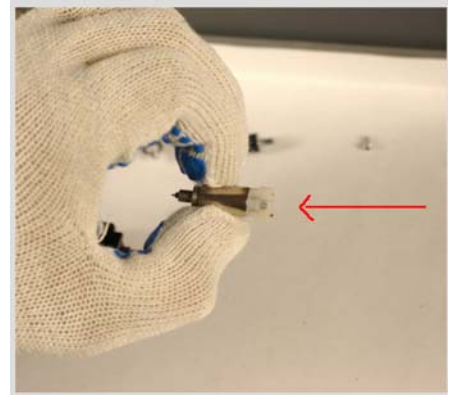
Marking Pin Installation Instructions



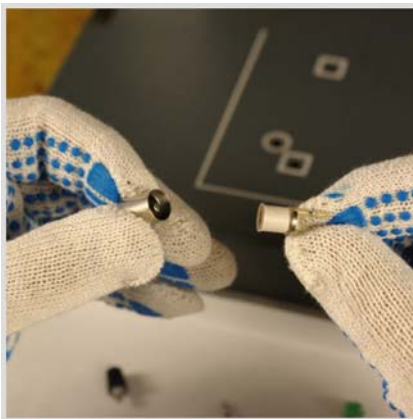
Separate cartridge from machine by removing the two black spindle-screws.



Remove the center screw from black shell. Push up from bottom (pin-side) to remove barrel.



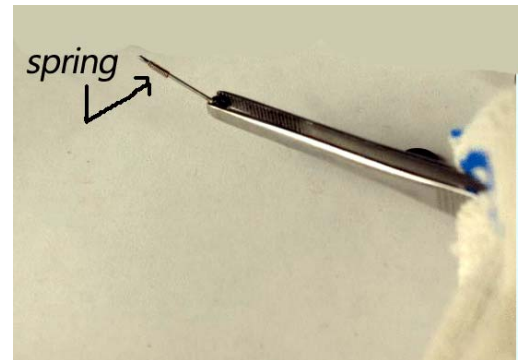
Unscrew entire white plastic assembly with fingers, keeping it horizontal or slightly angled up. This will prevent the parts, which are contained inside the plastic assembly, from falling out. Set aside white plastic assembly carefully, steel disk visible on top, or all the parts will fall out.



Separate the piece with *ears* from the silver metal barrel. Set aside *ears*. Turn attention to metal barrel taking note of metal spacer. Set metal spacer aside.

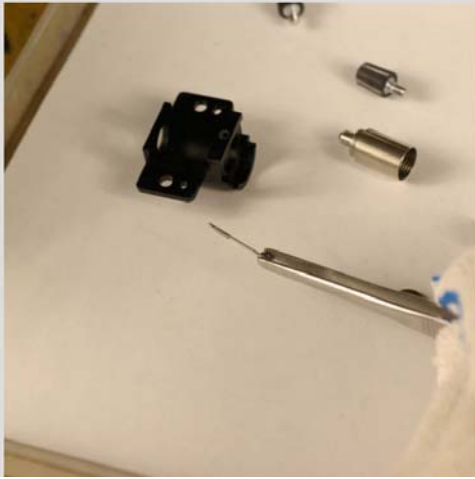


Remove old pin from metal barrel with tweezers or needle nose.



Remove fragile spring with fingers, set aside. End part one.

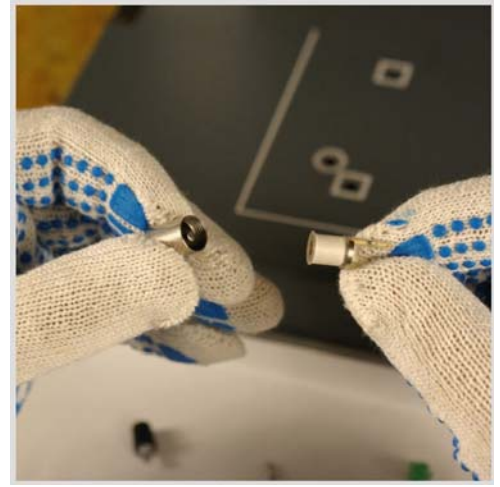
Marking Pin Installation Instructions



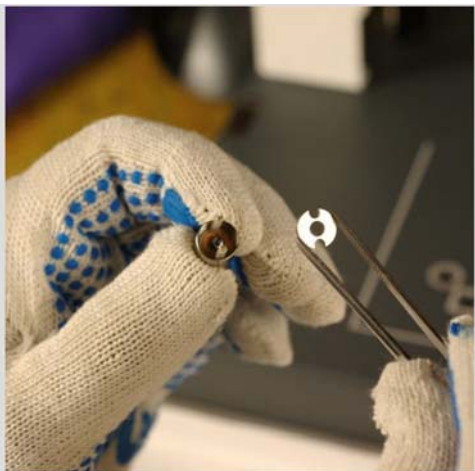
Grab replacement pin. Install existing spring.



Grab metal cylinder. Insert pin with spring into cylinder.



Grab ear-assembly. This assembly has a notch in the hole, which must align with the notch in the top of the marking pin. Align notches by sight or gently rotating until engaged, and then push down gently to seat. It will be seated properly when the top of the pin protrudes from the hole in the *ear*-assembly.



Align spacer with ears and drop metal spacer into the metal barrel.



Grab plastic assembly keeping it horizontal or slightly angled up to prevent inside pieces from falling out! Now, screw-in assembly finger- tight.



Re-install assembly into black shell, align assembly with one of the two screw holes, tighten screw. Congratulations, you have successfully completed the work

Marking Pin Installation Instructions

If the inside pieces fall out from the white plastic assembly, below is ordering diagram.

